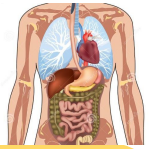


# KS4 & 5 Subject Curriculum Map

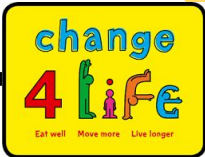
## Health & Social Care



Degrees in Nursing / Primary Education / Health & Social Care / Education Studies / Policing Studies / Social Work

Analysis • Attention to Detail • Communication • Empathy • Literacy • Organisation Problem solving • Research • Patience • Logical Thinking

Nursing, Primary Teaching, Social Worker, Occupational Therapist / Support Worker / Early years worker



**Next Steps**

**Exams**

- Revision & Coursework
- Revision techniques
- Practice Exam Skills & questions
- Coursework Completion

**Unit 11 – Psychological Perspectives (Diploma)**

- Explain & Evaluate different Psychological perspectives
- Apply Different Psychological Perspectives to individuals with different Psychological disorders

**Unit 14 – Physiological Disorders**

- Investigate the causes and effects of physiological disorders
- Diagnosis of physiological disorders
- Treatments of physiological disorders.



Revision and targeted support

**Exams - January**

**Unit 4 – Current Enquiries into Research in Health & Social Care (Diploma)**

- Issues researched in HSC
- Research Methods in HSC
- Carrying out and reviewing secondary research

Revision and targeted support

**Unit 7 – Principles of Safe Practice**

- Duty of Care & Safe Practice in HSC
- Abuse & Neglect
- Influence of Health & safety legislation
- Dealing with accidents & emergencies

**Unit 8 – Promoting Public Health**

- Strategies in Public Health
- Monitoring Health of Nation
- Factors affecting health and wellbeing
- Health Promotion Campaigns

**Introduction to Year 13**

- Unit 2 – Working in Health & Social Care
- Unit 14 – Physiological Disorders
- Unit 4 Diploma – Enquiries into Current Research
- Unit 11 – Psychological Issues

**YEAR 13**

**Unit 2 – Working in Health & Social Care**

- Roles and Responsibilities in HSC
- Role of organisations in HSC
- Working with people with specific needs

**Unit 5 – Meeting Individual Needs**

- Principles and Values and skills to meet individuals needs
- Ethical Issues
- How professionals enable individuals



Year 11 pupils have a programme of Advice and Guidance to help them choose Post 16 Pathways.

Revision and targeted support



**Unit 1 – Human Lifespan Development**

- Factors affecting Growth & Development
- Life Events & Impact
- Impact of an Ageing Society

**Introduction to Health & Social Care**

- Unit 1 – PIES Development
- Unit 5 -
- Diploma – Unit 7 -
- Diploma – Unit 8 - What is public health?

**YEAR 12**

**Principles of Care Revision**

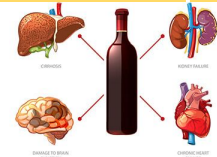
- Revision techniques
- Practice exam skills & questions

**Principles of Care**

- Protecting service users and service providers in H&SC
- Safety Procedures and Measures

**Principles of Care**

- Benefits of maintaining service users rights
- Person Centred Values
- Effective Communication



**Health Promotion Campaigns**

- Plan & Create a Health Promotion Campaign

**Impact of Life Events & Sources of Support**

- Expected & Unexpected life events
- Physical, Relationship Changes & Life Circumstances
- Formal Support
- Informal Support

**Health Promotion Campaigns**

- Public Health Issues
- Importance of healthy society

**Health Promotion Campaigns**

- Public Health Challenges – Obesity, Alcohol Consumption, Heart Disease / Stroke, Sexual Health.

**YEAR 11**

**Health Promotion Campaigns**

- Public Health Challenges – Physical Activity, Cancer, Mental Health, Smoking Cessation, Child Dental Health

**Health Promotion Campaigns**

- Benefits of Health Promotion Campaigns
- Factors Influencing Health and Wellbeing
- Barriers to leading a healthy lifestyle.



**Life stages and Development**

- PIES development across middle & later adulthood
- Factors affecting growth and development

**Life stages and Development**

- What are PIES?
- PIES development across Childhood
- PIES development across adolescence

**Introduction to Health & Social Care**

- Settings in Health & Social Care
- Rights of Service Users

**YEAR 10**